

Restroom Partition Installations

Photos as of print date:



508 Confetti Splash PCR



512 Black Star



513 Tornado



501 Confetti



508 Confetti Splash



504 Cool Blue



Custom - 60% 150 Pine Dust , 25% 113 Blueberry, 15% 101 Straw

Restroom Partition Introduction

History

Yemm & Hart Restroom Partitions are the result of repeated requests by many in the A & D community requesting Origins panels be converted into restroom partitions. Yemm & Hart has partnered with a leading partition manufacturer to bring this Restroom Partition product into the mainstream.

Contents

Yemm & Hart Restroom Partitions are available in any Origins pattern, solid or custom color pattern. The Origins material is 100% Post-Consumer recycled polyethylene. The feedstock for this material comes from milk jugs and detergent bottles marked on their bottoms with the resin abbreviation HDPE and the resin code number 2, surrounded by the 3 chasing arrows. The product contains no post industrial or virgin content. Yemm & Hart does not blend scrap or trimmings back into the product. All scrap is either recycled, goes into samples or becomes art & craft supplies for schools.

Process

Sorting and hot water washing begin the purification process for the plastic resin used for Origins. It is next melted and filtered while color pigment is added and then formed into pellets or flakes. Different colors of flakes or pellets are then blended together for Origins Patterns. The resin is pressed into Origins panels in an advanced large capacity press. Origins panels are CNC machined in a state of the art fabrication center. Restroom Partition hardware, is carefully matched and kitted for each project. All components ship together, directly to the jobsite, ready for installation.

Cost

Due to the processing required, Yemm & Hart Restroom Partitions will cost more than comparable polyethylene restroom partition that contain virgin resin or some amount of post-industrial resin.

Recognition

Yemm & Hart Restroom Partitions are readily available because the industry pioneers worked out the engineering properties for solid polyethylene, developed the hardware necessary for a strong installation and worked out the fire and building code issues.

Limitations

Origins panels are polyethylene panels and thus have the same advantages and limitations as any polyethylene panels. Due to the material's flexibility as it's length increases, the following conditions are unavailable:

1. Floor mounted only partitions.
2. Ceiling Hung partitions with panel and door heights greater than 55".
3. Ceiling Hung partitions without Continuous Wall Brackets.
4. Integral Hinges on partitions with door heights greater than 55".

Choosing Options

- Numerous hardware options are available.
- There are 3 basic partition styles:
 1. Floor mounted headrail braced.
 2. Floor mounted ceiling attached.
 3. Ceiling hung.
- Standard and Zero Sight-Line door styles.
- Origins panel prices vary with complexity.

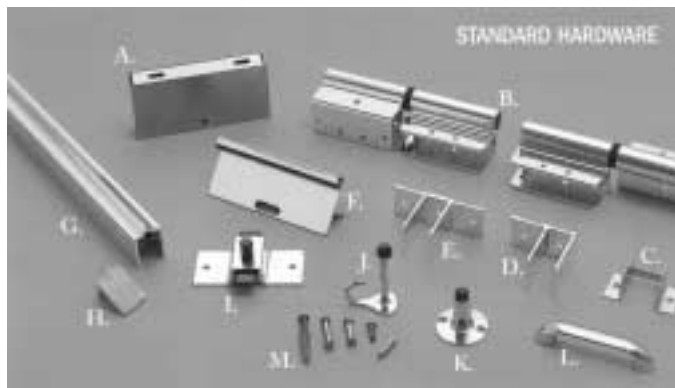
The Configuration Guide was developed to make the selection of options easier. Note that the underlined characters make up the Specification number. One of many possible partition configurations was chosen for printed publication to give examples of a typical specification, installation, elevation and plan view drawings. The Yemm & Hart web site <http://www.yemmhart.com/partitions/configurationguide.htm> will have specific configuration information or call to request it.

All inquiries are welcome.



Restroom Partition Configuration Guide w/ website drawing & spec locations

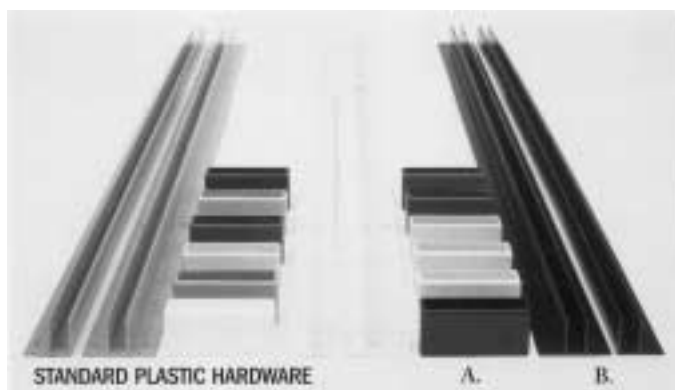
Floor Mounted Headrail Braced		Ceiling Hung		Floor Mounted Ceiling Anchored		Common Details		Vanity Tops	
Floor Mounted Headrail Braced - w/ Zero Sightline privacy feature						Drawings			
Hinge Type	Door Hardware	Wall Bracket Options	Specifications	Elevation	Plan View	Installation			
# 200 Integral	# 350 Stainless Steel	3 Standard Aluminum Clips	YHFH233As	YHFH233Ae	YHFH233Ap	For all Floor Mounted Headrail Braced Installations			
		Continuous Aluminum	YHFH23CAe	YHFH23CAp					
	# 400 Aluminum	3 Standard Aluminum Clips	YHFH243As	YHFH243Ae	YHFH243Ap				
		Continuous Aluminum	YHFH24CAe	YHFH24CAp					
# 605N Continuous S	# 350 Stainless Steel	3 Standard Aluminum Clips	YHFH633As	YHFH633Ae	YHFH633Ap				
		Continuous Aluminum	YHFH63CAe	YHFH63CAp					
	# 400 Aluminum	3 Standard Aluminum Clips	YHFH643As	YHFH643Ae	YHFH643Ap				
		Continuous Aluminum	YHFH64CAe	YHFH64CAp					
Ceiling Hung w/ Zero Sightline privacy feature						Drawings			
Hinge Type	Door Hardware	Wall Brackets	Specification	Elevation	Plan View	Installation			
# 605N Continuous S	# 350 Stainless Steel	Continuous Aluminum	YHCH63CAe	YHCH63CAe	YHCH63CAp	For all Ceiling Hung Installations			
	# 400 Aluminum	Continuous Aluminum	YHCH64CAe	YHCH64CAe	YHCH64CAp				
Floor Mounted Ceiling Anchored w/ Zero Sightline privacy feature						Drawings			
Hinge Type	Door Hardware	Wall Brackets	Specification	Elevation	Plan View	Installation			
# 200 Integral	# 350 Stainless Steel	3 Standard Aluminum Clips	YHFC233As	YHFC233Ae	YHFC233Ap	For all Floor Mounted Ceiling Attached Installations			
		Continuous Aluminum	YHFC23CAe	YHFC23CAp					
	# 400 Aluminum	3 Standard Aluminum Clips	YHFC243As	YHFC243Ae	YHFC243Ap				
		Continuous Aluminum	YHFC24CAe	YHFC24CAp					
# 605N Continuous S	# 350 Stainless Steel	3 Standard Aluminum Clips	YHFC633As	YHFC633Ae	YHFC633Ap				
		Continuous Aluminum	YHFC63CAe	YHFC63CAp					
	# 400 Aluminum	3 Standard Aluminum Clips	YHFC643As	YHFC643Ae	YHFC643Ap				
		Continuous Aluminum	YHFC64CAe	YHFC64CAp					
Common Details				Drawing					
Headrail Bracing Detail				YH1357					
Integral Hinge # 200 Detail				YH200					
Stainless Steel Slide Latch Detail				YH303LATCH					
Aluminum Slide Latch Detail				YH403LATCH					
Continuous Stainless Steel # 605N with Covers				YH605NCVR					
Floor Attachment Detail				YH702LVL					
Adjustable Angle Bracket Detail				YHANGLEWALL					
Ceiling Hung Detail				YHCHANG					
Pilaster Fastening Options				YHFASTOPS					
Floor Mounted Ceiling Attached				YHFCATTACH					
Pilaster Reinforcement Detail				YHPILREIN					
Vanity Tops				Elevation		Plan View			
Vanity Between Walls						YHVTBWp			
Vanity Between Wall and Panel						YHVTBWpp			
Vanity in Corner						YHVTCORnp			
Vanity End Support				YHVTENDe					
Free Standing Vanity						YHVTFREp			
Vanity Intermediate Support				YHVTINTe					
Please contact us if you need further information or help with a specification.									



Standard Hardware

- A. Stainless Steel Pilaster Shoe
- B. 8" Field Adjustable Aluminum Hinge
- C. Stainless Steel Headrail Bracket
- D. Aluminum Stirrup Bracket – Single Ear
- E. Aluminum Stirrup Bracket – Double Ear
- F. 6" Aluminum Strike and Keeper
- G. Aluminum Headrail
- H. Plastic Headrail End-cap
- I. Aluminum Slide Latch*
- J. Zamak Bumper/Coat Hook
- K. Zamak Door Stop
- L. Zamak Door Pull
- M. Stainless Fasteners – 1-1/2" Phillips-head screw and plastic anchor. Tamper resistant S.S. – 1-1/4" sex bolt pair, 1" sex bolt pair, 3/4" Torx head screw and Torx bit

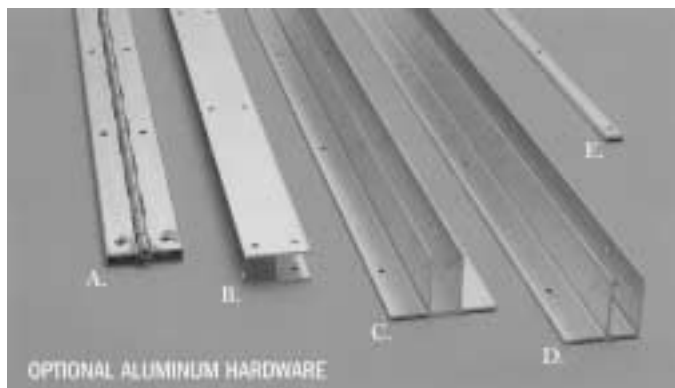
*Complies with ADA



Standard Plastic Hardware (no PCR)

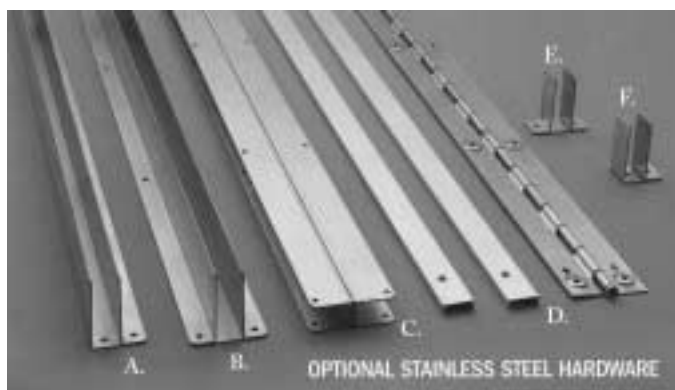
- A. Pilaster Shoes
 - B. 54" Plastic Wall Brackets – Single Ear, Double Ear (shown) and H – Bracket (not Shown)
- Plastic Shoes and Wall Brackets are available in the following colors: Gray, White, Burgundy, Beige, Royal Blue, Black, Brown, Teal, Glacier Gray, Mint Green, Cappuccino and Sand Castle.

Note: The Standard Plastic Hardware consists of extruded wall brackets and injection molded Pilaster Shoes. They will appear as solid colors and will not match Origins Patterns.



Optional Aluminum Hardware

- A. 54" Spring Loaded Hinge
- B. 54" H – Bracket
- C. 54" Double Ear Wall Bracket
- D. 54" Single Ear Wall Bracket
- E. Heat Sink



Optional Stainless Steel Hardware

- A. 54" Single Ear Wall Bracket
- B. 54" Double Ear Wall Bracket
- C. 54" H – Bracket
- D. 54" Spring Loaded Hinge (with covers)
- E. Double Ear Stirrup Bracket
- F. Single Ear Stirrup Bracket



Restroom Partition Maintenance & Care

Yemm & Hart Green Partitions were chosen partly because they require little maintenance.

1. Clean partitions with solution of warm water and non-abrasive ammoniated cleaner such as Ajax liquid or mild solvent for more persistent stains and adhesive residue. Use a non-abrasive sponge or terrycloth.
2. Lubricate hinges with silicone spray or white grease, as necessary.
3. Periodically, check for loose or missing fasteners. Contact Yemm & Hart for replacements.
4. Light scratches can be easily healed. Burnish the surface with a smooth rounded object, such as the backside of a spoon or the rounded end of a screwdriver handle. Using the smooth rounded object, apply pressure to the cut or scratched surface and burnish with, NOT AGAINST, the cut or scratch.
5. Deep scratches can be sanded out, using progressively finer grits until a matching sheen is achieved. Note: The original texture is factory embossed and is not achievable on site. The surface of the repaired plastic can be sprayed with silicone to give the panel a new bright glossy look.

SHOULD THERE BE ANY QUESTIONS, CONTACT YEMM & HART LTD



FLOOR MOUNTED HEADRAIL BRACED – Integral Hinge, 3 Aluminum Clip (Stirrup) Brackets

1.0 GENERAL

1.1 Scope: Provide solid plastic toilet partitions and urinal screens as shown on the drawings and as specified herein.

1.2 Related Work Specified Elsewhere.

A. Toilet and Bath Accessories

1.3 Submittals

A. Shop Drawings: Showing layout of toilet partitions, urinal screens, vanity tops and shower stalls.

B. Product Data: Manufacturer's catalog cuts of typical panel, pilaster, door, hardware and fastening.

C. Color Samples: Manufacturer's complete range of standard colors.

2.0 PRODUCTS

2.1 Toilet Partitions

A. Source: Origins Partitions, floor mounted headrail braced, standard design, as manufactured by **YEMM & HART LTD.**

B. Qualities:

1. **Panels** - shall be ORIGINS solid polymer resin nominal 1" thick by 55" high and of required depth with uniformly machined radius edges. Panels shall be anchored to front pilasters with a continuous "U" channel and to wall with 3 standard aluminum double ear clip brackets. All brackets shall be heavy extruded brite-anodized type 6463T5 aluminum.

2. **Doors** - shall be nominal 1" thick by 55" high and of the same design and construction as specified for dividing panels.

3. **Pilasters** - shall be nominal 1" thick by 82" high and of the same design and construction as specified for dividing panels and doors. Pilaster shall be secured to the floor by means of a 1/8" aluminum angle and 3/4" tamper-proof Torx screws and to walls with 3 standard aluminum single ear clip brackets. Top bracing shall be brite anodized aluminum channel 1-1/2" x 1-1/4" weighing no less than 0.75 pounds per linear foot of "anti-grip" design to cap top of pilasters and secured on inside of compartment with 5/8" stainless steel tamper-proof Torx screws. Floor fasteners shall be concealed by a 4" high one-piece 20-gauge type 304 stainless steel floor shoe.

4. **Hardware** - compartments shall be supplied with all hardware and fasteners for a complete installation. . Doors shall be hung on #200 Integral Hinge which may be set during installation at 30° for in-swing and closed for out-swing. Strike shall be a high-density polymer resin combination strike and Zero-Sight Line rabbet groove. Keeper and latch housing shall be heavy extruded brite anodized type 6463T5 aluminum. Slide bar and knob shall be heavy extruded brite anodized type 6463T5 aluminum with Duracoat black finish. Door pull shall be #406 Zamac. Coat hook/ wall bumper shall be heavy chrome-plated Zamac. All hardware shall be fastened with tamper-proof fasteners. Handicap stall door shall be equipped with a slide latch that does not require gripping or twisting and door shall be slotted to permit emergency access.

5. **Fittings** - all brackets shall be heavy extruded brite anodized type 6463T5 aluminum. Floor and wall fasteners shall be #14 x 1-3/4" tamper-proof Torx screws with conical plastic anchors. All other fasteners shall be 5/8" stainless steel tamper-proof Torx screws. Headrail brackets shall be 18-gauge stainless steel.

6. **Finish** - material shall be homogenous "ORIGINS" with uniform color pattern throughout and special mar-resistant textured finish, in manufacturer's standard color patterns, solid colors or custom color patterns.



FLOOR MOUNTED HEADRAIL BRACED – Integral Hinge, 3 Aluminum Clip (stirrup) Brackets - continued

2.2 Urinal Screens - Wall Hung

A. Source: Origins Partitions, as manufactured by **YEMM & HART LTD**

B. Qualities:

1. Screens shall be "ORIGINS" solid polymer resin nominal 1" thick by 42" high with uniformly machined radius edges. Screen shall be anchored to wall with one full length double ear heavy extruded brite anodized type 6463T5 aluminum bracket and six (6) #14 x 1-3/4" fasteners into conical plastic anchors.

2.3 Urinal Screens - Floor Braced

A. Source: Origins Partitions, as manufactured by **YEMM & HART LTD**

B. Qualities:

1. Screens shall be "ORIGINS" solid polymer resin nominal 1" thick by 42" high with machined radius edges. Screens shall be anchored to wall with one full length double ear heavy extruded brite anodized type 6463T5 aluminum bracket and to the pilaster by means of a continuous brite anodized aluminum "U" channel Pilaster shall be "ORIGINS" solid polymer resin nominal 1" thick and anchored to the floor with a 1/8" aluminum angle and # 14 x 1-3/4" tamper-proof Torx screws into conical plastic anchors. Floor fasteners shall be concealed with a 4" high one-piece 20-gauge type 304 stainless steel shoe.

3.0 EXECUTION

3.1 Installation

- A. Install partitions rigid, straight, plumb and level in accordance with manufacturer's instructions. Set units with not more than 1/2" between pilasters and panels and not more than 3/4" between panels and walls.
- B. Secure to structural concrete floor and walls with #14 x 1-3/4" tamper-proof Torx screws and conical plastic anchors (2" x 6" wood blocking is recommended for fastening partitions to drywall construction).
- C. Adjust and lubricate hardware for proper operation after installation.
 1. Set hinges on in-swing doors to hold doors in the open or closed position when unlatched as shown on drawings.
 2. Set hinges on out-swing doors to return to the fully closed position.

Remove protective plastic coating.



INSTALLATION INSTRUCTIONS – Floor Mounted Headrail Braced

Prior to any installation, verify room dimensions to assure they concur with drawings and partition dimensions. Check packing list for hardware and material count. Inventory material to verify there are no shortages. Should shortages be found, notify Yemm & Hart within 7 days of receipt of material.

1. Locate front of stalls as shown on floor plan drawings. Snap chalk line 1/8" greater than the overall depth dimension. See shop drawings.
2. Place 1/8" aluminum floor angles on chalk line, opening toward rear of stall. (Angles are 1" smaller than pilaster width, i.e. 5" angle is for 6" pilaster.)
3. Locate angles so they center on pilasters per floor plan drawings. Mark floor and drill with 5/16" masonry bit. Tap plastic plugs in floor and anchor angle to floor using #14 x 1-3/4" screws. See Pilaster Mounting Detail.
4. Locate pilaster to wall brackets at height indicated on elevation drawing and centered at pilaster location per floor plans.
5. Mark holes; drill wall using 5/16" masonry bit (masonry wall only). Set plastic anchors and fasten bracket with 1-3/4" screws. For drywall construction, sufficient blocking must be set in the wall. Drill wall with a #7 high speed drill bit and fasten bracket with 1-3/4" screws.
6. Locate panel to wall brackets (#201 or #101) at levels indicated on elevation drawing and centered at panel location per floor plans. Brackets must be even in height with other brackets. See Typical Elevation drawing. **NOTE:** A bracket with a "C" suffix is a continuous bracket 1/2" shorter than the panel height.
7. Locate panel to pilaster bracket #001C at rear of correct size pilaster. Place it at the proper height from bottom (see elevation sheet), mark holes. Drill plastic pilaster (1) if 5/8" Torx screws are provided; use 1/8" high-speed drill bit; drill hole 3/4" deep or (2) if thrubolts are provided use 1/4" high-speed drill bit. Set brackets with screws or thrubolts supplied.
8. Place panel to pilaster #001 C bracket attached to pilaster, leaving approximately 1/4" space between pilaster and panel. Using bracket as template, drill panel with drill bit as above in #7 and anchor panel using screws or thrubolts as supplied.
9. Slide floor shoe on bottom of pilaster (hemmed portion up and out).
10. Set pilaster behind aluminum floor angle while sliding panel into wall bracket. **NOTE:** Panel must be supported using scissor jacks or blocks. Pilaster must be **straight** full length, not bowed below or above panel.



INSTALLATION INSTRUCTIONS – Floor Mounted Headrail Braced - continued

11. Using holes in wall bracket as template, drill panel with drill bit as above in #7 and fasten panel to wall brackets using screws or thrubolts as supplied. Make sure panel is level and even in height with other panels.
12. Fasten pilaster to floor angle using #14 x 1" Torx screws, making sure pilaster is plumb, correct door opening is maintained, pilaster is the same depth as the others in the row. **NOTE:** Pre-drill pilaster with 1/8" high-speed drill bit before anchoring with screws.
13. Repeat previous steps for all panels and pilasters.
14. Place headrail over pilasters. Mark wall for #701 headrail bracket. Drill wall with 5/16" masonry bit (masonry wall only). Insert plastic plug and anchor bracket with 1-3/4" screws. For drywall construction, sufficient blocking must be set in the wall. Drill wall with a #7 high speed drill bit and fasten bracket with 1-3/4" screws. Secure headrail to pilaster using screws or thrubolts, make sure pilasters are plumb and door spacing is maintained. This is very important. **NOTE:** For in-corner conditions, headrail should be mitered at corner of end pilaster for best appearance and fastened to edge of end pilaster or locate headrail over end panel using small aluminum U-brackets supplied at pilaster and stainless steel headrail bracket at wall.
15. Put floor shoe on pilaster and locate wall pilaster in #101 or #102 brackets. Anchor to floor and wall brackets with correct fasteners (#14 x 1" for angles and #14 x 5/8" torx screws or thrubolts for brackets). Make sure pilaster is plumb and door spacing is maintained.
16. See hinge hardware drawing for assembly instructions.
17. Hang doors with proper hardware including slide latch, stop-keeper and coat hook. For out-swing doors, wall bumper and handle are supplied.
18. Lubricate hinges with silicone spray or white grease.
19. Remove all production stickers.
20. Clean partitions with solution of warm water and **non-abrasive** ammoniated cleaner such as Ajax liquid or mild solvent for more persistent stains and adhesive residue.

SHOULD ANY PROBLEMS OCCUR, CONTACT YEMM & HART LTD



Restroom Partition 15 Year Warranty Information

Yemm & Hart Ltd ventures to bring to the owner, specifier and contractor a superior product designed to withstand the extraordinary use of today's market. Through the use of modern day technology and contemporary materials, we have designed and engineered our products to withstand the test of time. We believe in our products, and back them with the following warranty.

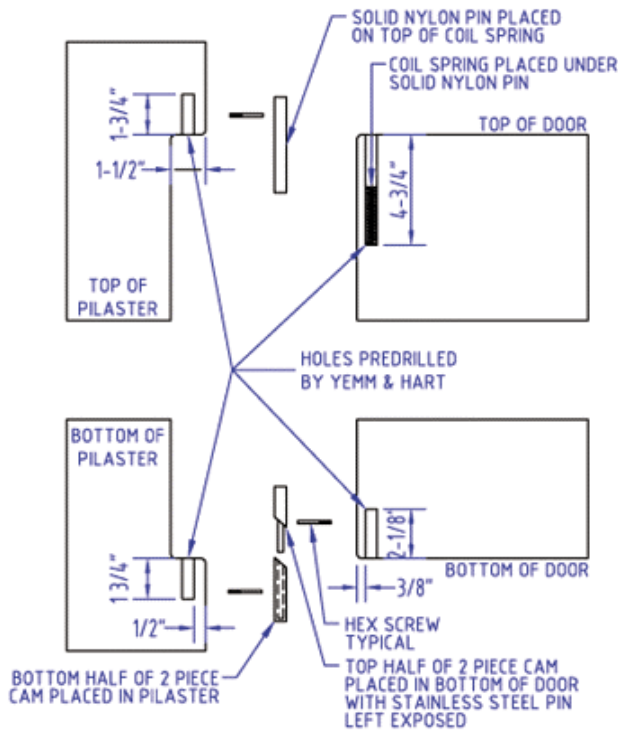
ORIGINS HDPE is high density polyethylene, a solid polymer resin. Yemm & Hart Ltd warrants Origins doors, panels, pilasters, counter and table tops against defects in material and factory workmanship for a period of one year and against breakage, delamination and rusting for a period of **15 YEARS** from the date of sale (excluding any bending, lamination or vandalism by others). This warranty is limited to the replacement of materials only and does not cover any expenses incurred for removal and/or reinstallation of replacement material or transport.

CONTINUOUS HINGE – Yemm & Hart Ltd warrants this hinge against breakage (barring vandalism) for a period of **15 YEARS** from the date of sale. This warranty is limited to the replacement of the hinge and does not cover any expenses incurred for removal and/or reinstallation of replacement material or transport

Please contact us if you need further information or help with a specific application.



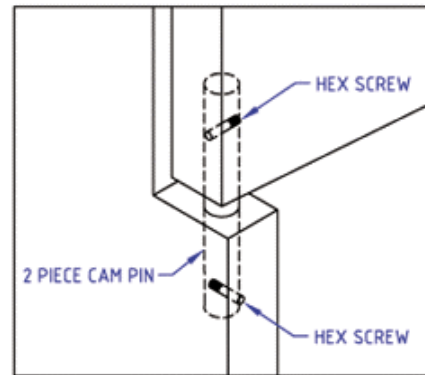
#200 INTEGRAL HINGE INSTALLATION DETAIL



NOTE:

HEX SCREW PILOT HOLES PREDRILLED IN DOORS AND PILASTERS. SET CAM ANGLE AND DRILL NYLON UPON INSTALLATION.

*HEX SCREW IS REMOVABLE BY USING A 1/16" HEX HEAD WRENCH OR A T-7 TORX BIT, AND TURNING COUNTER-CLOCKWISE.



BOTTOM PIN ASSEMBLY

INSTALLATION INSTRUCTIONS:

PLEASE REVIEW INTEGRAL HINGE DETAIL TO ASSURE ALL PARTS ARE CORRECT AND AVAILABLE. TOP AND BOTTOM OF DOOR ARE DETERMINED BY THE DEPTH OF THE HINGE HOLE. THE 4-3/4" DEEP HOLE IS THE TOP. THE 2-1/8" HOLE IS THE BOTTOM.

STEP 1. TURN DOOR SO THE BOTTOM IS UP. INSERT THE "MALE" HALF OF THE CAM SET IN THE 2-1/8" DEEP HOLE. THE EDGE OF THE DOOR HAS A 1/8" DIAMETER HOLE. AFTER THE CAM IS INSERTED, DRILL IN THE EXISTING 1/8" EDGE HOLE WITH A 1/8" BIT THROUGH THE NYLON OF THE CAM. TAP IN THE HEX SCREW SUPPLIED TO LOCK CAM INTO PLACE.

STEP 2. INSERT THE "FEMALE" HALF OF THE CAM INTO THE 1-3/4" HOLE IN THE BOTTOM OF THE PILASTER CUT OUT. (DO NOT DRILL OR PIN THIS PART YET.)

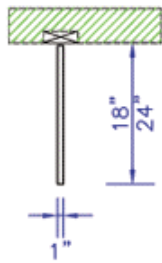
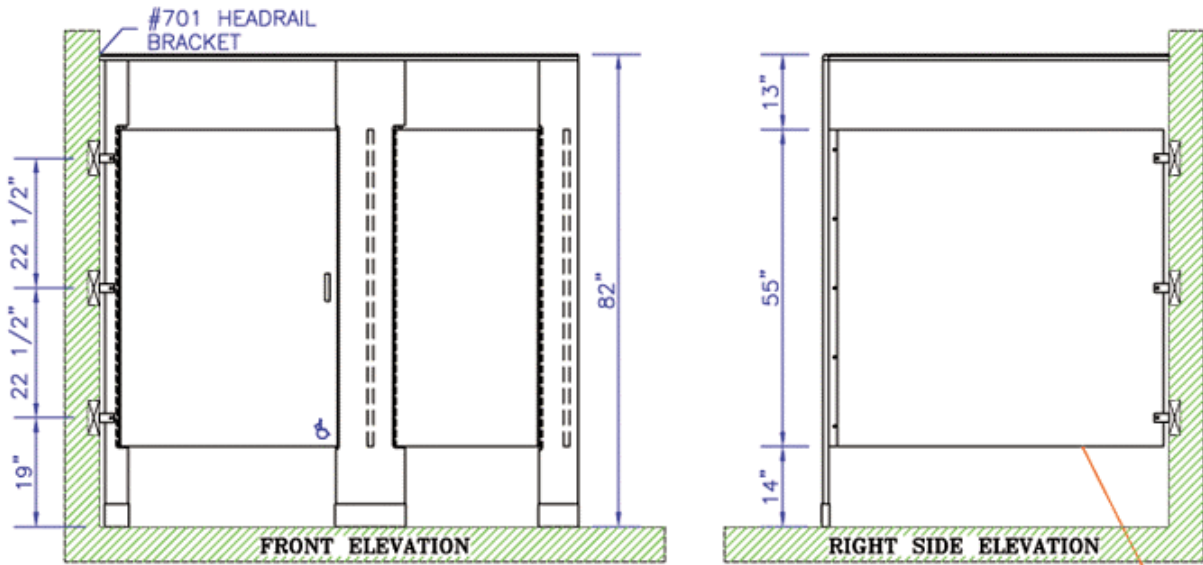
STEP 3. TURN THE DOOR TOP UP, INSERT THE COIL SPRING AND THE SOLID NYLON PIN.

STEP 4. LIFT THE DOOR AND MATE THE LOWER CAMS WHILE DEPRESSING THE UPPER NYLON PIN. WHEN THE PIN IS ALIGNED WITH THE HOLE IN THE TOP OF THE PILASTER CUT-OUT, RELEASE THE PIN SO THE DOOR IS SECURED IN PLACE.

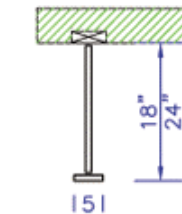
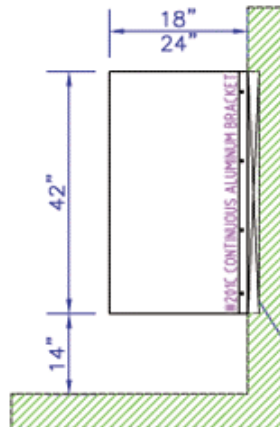
STEP 5. POSITION THE DOOR AT THE DESIRED DEGREE (USUALLY INSWING 30° OPEN AND OUTSWING 0° OR CLOSED.) DRILL THE EDGE OF THE PILASTER BELOW THE DOOR (AS IN STEP 1) TO SET THE HEX SCREW TO FIX THE CAMS IN THE PREDETERMINED LOCATION.

material: ORIGINS HDPE	style:	panel to plaster fasteners:	YEMM & HART GREEN PARTITIONS 1417 MADISON 308 MARQUAND MO 63655-9153 USA TEL 573-783-5434 FAX 573-783-7544 info@yemmhart.com
plaster thickness: 1"	door thickness: 1"	panel thickness:	
		panel and door height: 55"	
door hinge: #200 INTEGRAL		partition fastener:	
door hardware:		wall fastener:	
special conditions: ZERO-SIGHT LINE (NOT SHOWN)	notes:	floor shoe:	
		floor anchor:	
		bracket:	
special conditions:	notes:	div type: DETAIL	div #: YH200
		date: 04/06/2002	rev date:

TYPICAL ELEVATIONS FOR FLOOR MOUNTED HEADRAIL BRACED RESTROOM PARTITIONS WITH ZERO-SIGHT LINE, #200 INTEGRAL HINGE, #400 ALUMINUM HARDWARE AND 3 STANDARD ALUMINUM CLIP BRACKETS.



WALL HUNG URINAL SCREEN



PILASTER SUPPORTED URINAL SCREEN

material: ORIGINS HDPE	style: FLOOR HEADRAIL	panel to plaster fasteners: CONCEALED
plaster thickness: 1"	door thickness: 1"	panel thickness: 1"
door hinge: #200 INTEGRAL	panel and door height: 55"	partition fastener: TORX SCREW
door hardware: #400 ALUMINUM	floor shoe: STAINLESS S	wall fastener: TORX SCREW
special conditions: ZERO-SIGHT LINE	notes:	floor anchor: ALU ANGLE
	bracket: 3 STANDARD ALUMINUM CLIP	
	notes:	div type: ELEVATION

YEMM & HART
 GREEN PARTITIONS
 1417 MADISON 308 MARQUAND MO 63655-9153 USA
 TEL 573-783-5434 FAX 573-783-7544 info@yemmhart.com

div #: YHFH243Ae
 date: 04/06/2002
 rev date:

